



# THE MONETARY AWARD PROGRAM

# mapmatters



## FOR ALMOST 60 YEARS, THE MONETARY AWARD PROGRAM (MAP) HAS HELPED MAKE COLLEGE POSSIBLE FOR MILLIONS OF ILLINOISANS ACROSS THE STATE

MAP recipients come from every legislative district and county in the state. MAP provides need-based aid that a student doesn't have to repay, defraying tuition and fee costs and limiting excessive student loan debt for those who don't have the resources to pay for college.

**Historic funding levels.** For more than 20 years, the level of MAP funding was unable to keep up with tuition and fee increases, and funding ran out quickly, leaving many eligible low-income students without access to this critical grant. Unprecedented increases in the last five years brought the program's funding to \$721.6 million in FY26.

**Life-changing impact.** In FY25, more than 151,000 students used a MAP award to attend college, with maximum awards over \$8,000. Bigger grant sizes have improved the purchasing power of MAP and increased the likelihood that a student will enroll, persist, and graduate with less debt. It is expected that in FY26 more than 150,000 students will begin or continue their higher education journey to meet their career goals, thanks in part to MAP funding.



"For me, MAP = degree. The Monetary Award Program helped make college possible for me, especially after my only parent lost her job while I was in college. I thought I was going to have to drop out. I wouldn't be here without MAP."

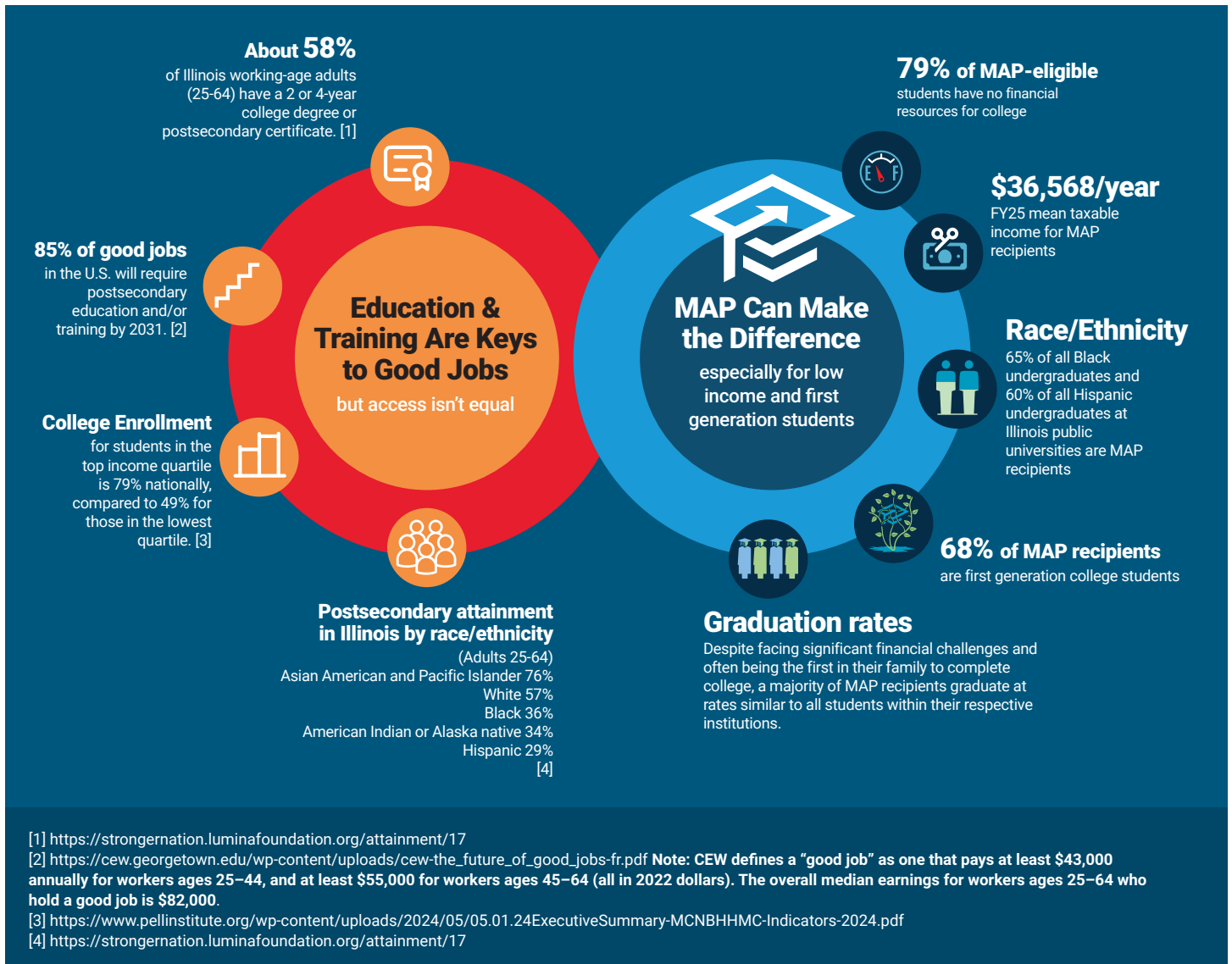
**MELISSA HAHN**

# MAP Can Make the Difference



“As a self-supporting undergraduate student, the MAP grant helped to decrease my tuition payments and relieve much of my financial burden. The grant helped make it possible for me to attend and graduate from college and helped inspire me to pursue a career helping other students find success through postsecondary education.”

**SERENA NICOLE ROBERTSON**



[1] <https://strongernation.luminafoundation.org/attainment/17>

[2] [https://cew.georgetown.edu/wp-content/uploads/cew-the\\_future\\_of\\_good\\_jobs-fr.pdf](https://cew.georgetown.edu/wp-content/uploads/cew-the_future_of_good_jobs-fr.pdf) Note: CEW defines a “good job” as one that pays at least \$43,000 annually for workers ages 25–44, and at least \$55,000 for workers ages 45–64 (all in 2022 dollars). The overall median earnings for workers ages 25–64 who hold a good job is \$82,000.

[3] <https://www.pellinstitute.org/wp-content/uploads/2024/05/05.01.24ExecutiveSummary-MCNBHMC-Indicators-2024.pdf>

[4] <https://strongernation.luminafoundation.org/attainment/17>



“MAP made it possible for me to attend college. I was the only Latina in the honors program in college. I didn’t see people like me crossing the stage in college or graduate school, and that hit home. I am very grateful for the MAP grant because without it I wouldn’t have been able to afford college, attain my degree, and pursue the career I wanted.”

**JASMINE JETTON-GONZALES**

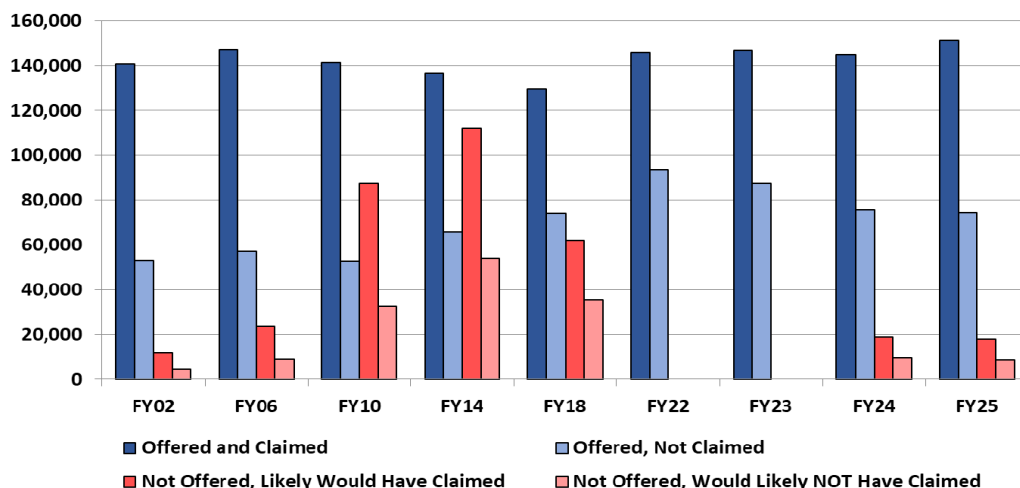
# Working to Meet Demand and Improve MAP Purchasing Power

## Demand for MAP

**Good News:** More students with lower incomes are attending college

**Bad News:** MAP funding is not meeting demand

### Demand for MAP Exceeds Supply, Again



Note: ISAC calculates the number of students who would likely have accepted the award, had they been offered it, based on the previous year's data on awards offered and awards accepted (claimed) by college sector.

## MAP Purchasing Power

### Maximum MAP grant coverage of average tuition and mandatory fees:

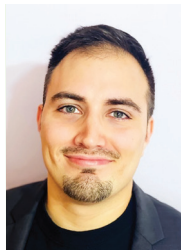
- **55% coverage at a community college** (19 percentage points higher than FY19)
- **45% coverage at a public university** (14 points higher than in FY19)

#### Why is this important?

The MAP award size must be significant enough, usually in combination with other grants like Pell, to make it possible for a student with financial challenges to attend college.

The combination of MAP and Pell grants allows virtually every recipient at or below the median income in Illinois to attend community college tuition-free.

Demand for MAP has increased from FY24 to FY26. With the Governor's proposal of flat funding in FY27 to address challenges resulting from uncertainty at the federal level, it is expected that about 150,000 eligible students would be able to pursue their education with the help of MAP. Purchasing power, however, will continue to erode with ongoing tuition and fee growth.



"I would not have been able to graduate from college without the MAP grant. MAP allowed me to focus more on my studies without worrying about how I was going to be able to afford college. The MAP grant was so important to me that I've focused my career on working with counselors and other education professionals to help them help their students reach their postsecondary goals."

**MANUEL TALAVERA**

# Where MAP recipients go to school

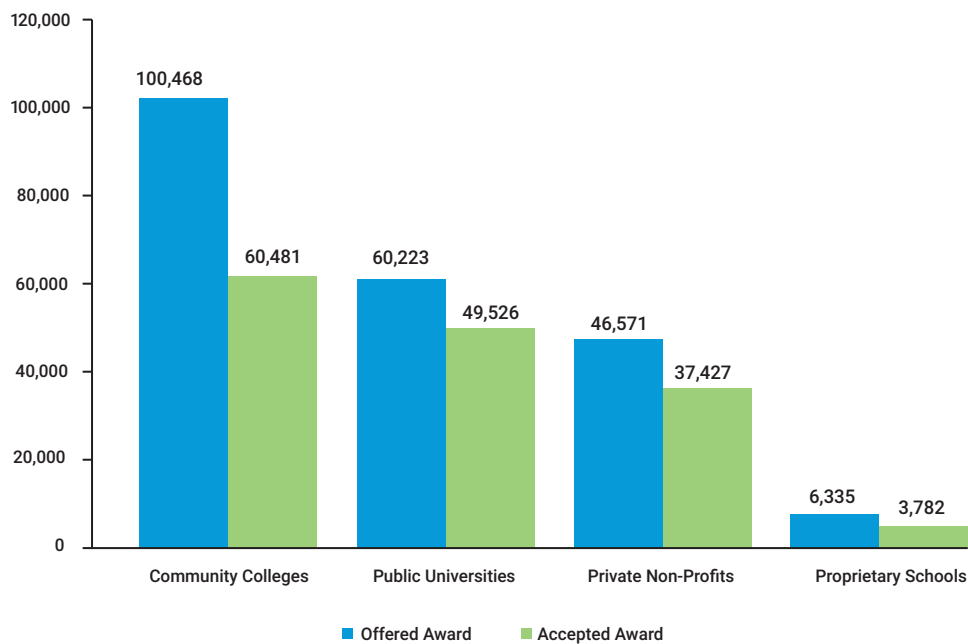
**MAP recipients are enrolled in all sectors of higher education.**

## Did you Know?

A student's eligibility for MAP is determined using information provided on the Free Application for Federal Student Aid (FAFSA®) or the Alternative Application for Illinois Financial Aid.

**In FY25, community college students were offered and accepted the most grants, but the percentage of students who accepted grants is much higher at public universities and private non-profit schools.**

## FY25 MAP Grants Offered and Accepted by Sector



## FY25 MAP Grants, by Sector

	MAP-Eligible Students Offered Awards	% of Awards Offered by Sector	Students Who Accepted MAP Awards	% of Awards Accepted by Sector	% of Students Offered an Award Who Claimed	Total Dollar Amount for Eligible Students	Total Dollar Amount Claimed	% \$ Claims	Sector % of Total Claims	Avg MAP Eligibility	Avg MAP Claim
<b>Community Colleges</b>	100,468	47%	60,481	40%	60%	\$278,286,504	\$97,630,160	35%	14%	\$2,770	\$1,614
<b>Public Universities</b>	60,223	28%	49,526	33%	82%	\$465,472,721	\$325,363,0052	70%	46%	\$7,729	\$6,570
<b>Private Non-Profits</b>	46,571	22%	37,427	25%	80%	\$373,112,576	\$258,371,156	69%	37%	\$8,012	\$6,903
<b>Proprietary Schools</b>	6,335	3%	3,782	3%	60%	\$50,348,680	\$18,821,548	37%	3%	\$7,948	\$4,977
<b>Total</b>	213,597	100%	151,216	100%	71%	\$1,167,220,481	\$700,185,916	60%	100%	\$5,465	\$4,630

Dollar amount of award is based on student's estimated financial need, hours enrolled, and cost of attendance at student's selected MAP-eligible school.